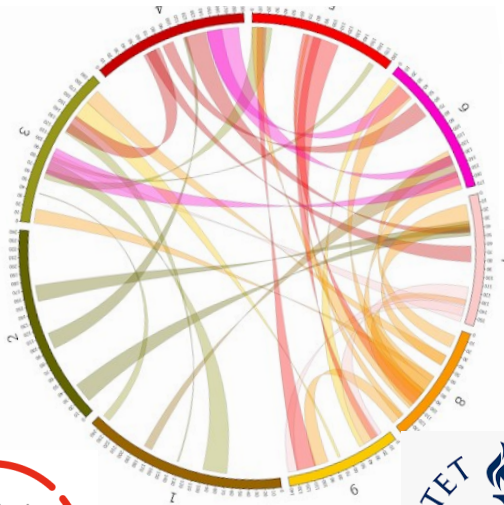


BUILDING INTEGRATIVE SINGLE CELL OMICS CAPACITIES USING INVERTEBRATE TUMOR MODELS RELEVANT TO HUMAN DISEASE



SCENTINEL
Kick-off Meeting 21-22 June 2024



**Funded by
the European Union**

IMBB challenges

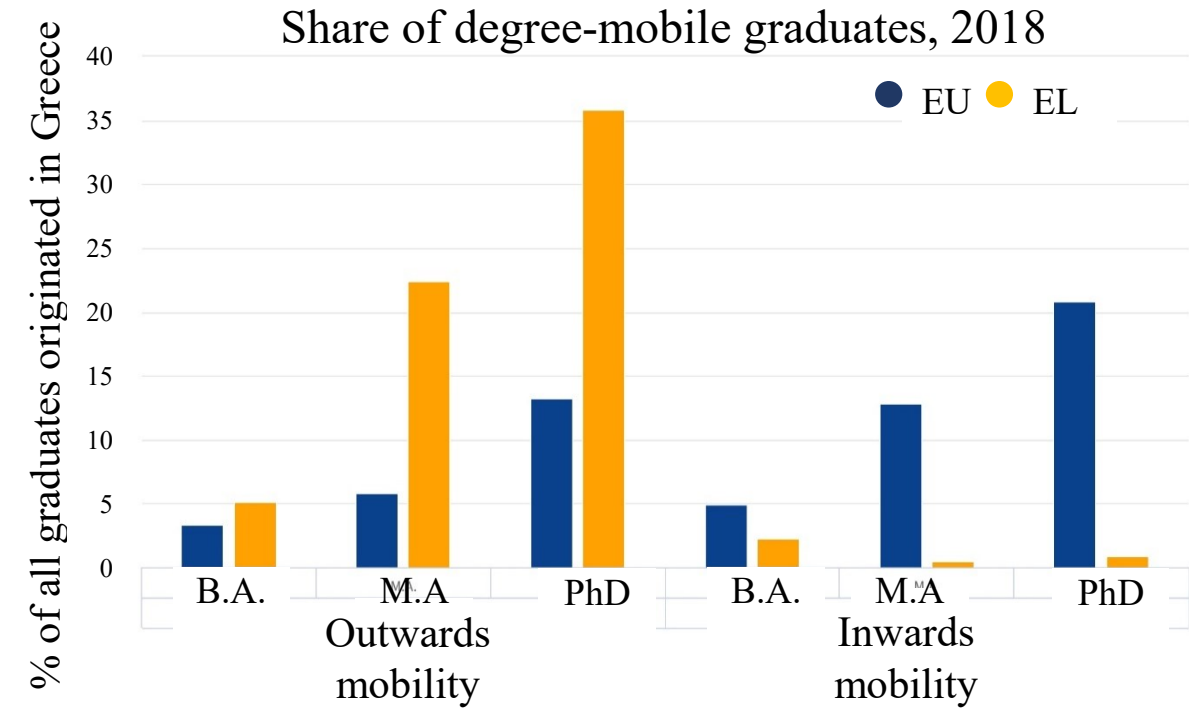
- a) substantial upgrade infrastructure and knowledge >keep up with fast technological, scientific advances
- b) modern practices of institutional management
- c) difficulties in retaining and recruiting skilled scientists/young talents

IMBB has

- a) Enthusiastic/talented human capital (scientists, permanent staff)
eager to develop, witness modernization of IMBB infrastructures and FORTH Operational Offices,
for improved working conditions and impactful research
- b) many labs using invertebrate models, long-standing excellence in Drosophila research
EU efforts for phasing out animal use in research-> environmentally sustainable, ethical research
- c) The Foundation for Research and Technology - FORTH research ecosystem

Greek Research Challenges

1. Low scientific performance metrics
2. Brain drain and limited attractiveness
3. Career uncertainty (senior scientists, women)



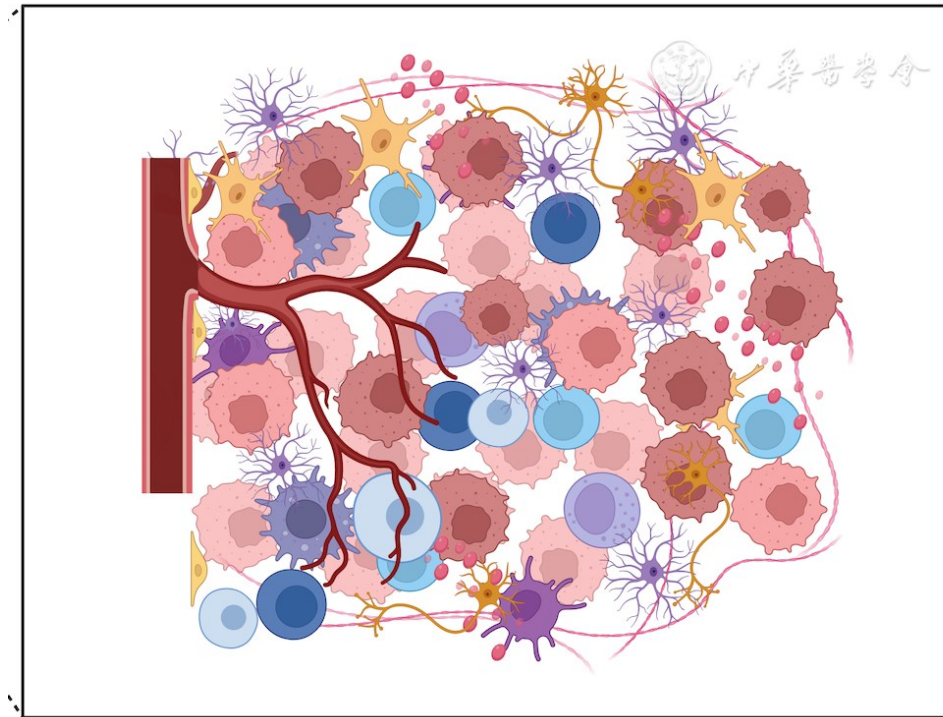
SHE Figures, on gender disparities in the EU R&I system

- Higher Educational Sector (HES)
(EU-27 23.6%, EL-16%)
- Working under 'precarious' contracts
(EU-27 Female-9.01%/Male-7.71% vs.
EL Female-10.13%/Male-3.35%)

Social scientist, UoC

- Research ethics, research integrity
- Sociology of gender
- Research misconduct

Scientific challenges



SCENTINEL activities aim at:

a) Develop IMBB capacities:

In single-cell technologies and bioinformatics

Upgrade Genomics capacities (training to save on time and resources)

10 X Chromium (Chamilos/Talianidis labs) and PIPseq technology (Enzyquest/IMBB labs).

Establish a Bioinformatics Core (IMBB Director Vontas investing in such a team)

FAIR data management plans, reproducible concrete pipelines > provide excellent services

b) Understand biological processes in tumor ecosystems

Produce collaborative, open, high impact publications,

Raise international visibility to attract and retain talents.

c) Strengthen EU collaborations

a critical mass of European Drosophila experts and beyond, scientific output and creativity

d) Research management excellence.

FORTH Support Offices, training activities and exchange knowhow of best practices.



UoC

